

DATA CARD



C/SIGN :

Escort_me

Air Task Order

Conception : Tursiop

Un AWACS E-3 doit se rendre sur la base de Shenyang. Une escorte a été mise en place pour assurer la supériorité aérienne autour du vol CHALIS1 et supprimer toutes les menaces Sol/Air se trouvant sur le plan de vol.

Tactical Situation

Theatre : Korea

Air threats

Ground Threats

Airbases en alertes :

- T'aech'on : Mig29A (AA8/AA11)
- Uiju : SU-27 (AA11/AA12)
- Liuhe : Mig-21F (AA2C/D)

Airbase de T'aech'on sous couverture SA2, SA3 et SA5.

Mission Management

IN -Coordination - Commit - R.O.E.

Armement libre TOT impératif avant **6:40**

Vol Cowboy : Strike de T'aech'on Airbase (TGT4) OU Uiju Airbase (TGT5) - ordre du Lead Package.

Vol Fury : Traitement des sites SAM sur la route (SA2-PPT56, SA3-PPT57, SA5-PPT58)

Vol Falcon : Assure la supériorité aérienne et escort le package.

Vol Chalis : Assurer la picture et de rendre sur la Base de Shenyang.

OUT - Coordination - RTB - Landing

Route nord-sud

Refuel possible sur Sunan (WPT3) ou Airbases plus au Sud.

Airbases

Type	Location	TCN	RNG	ILS	QFU	N	E
Takeoff	Kimpo	083X	25	109.9	14/32-LR	37°35.05'	127°42.52'
Alter	Sunan	051X	100	109.9	18/36-16/34	39°15.82'	126°22.18'
Land	Shenyang	088X	50	N.A	05/23-LR	41°55.31'	123°37.29'

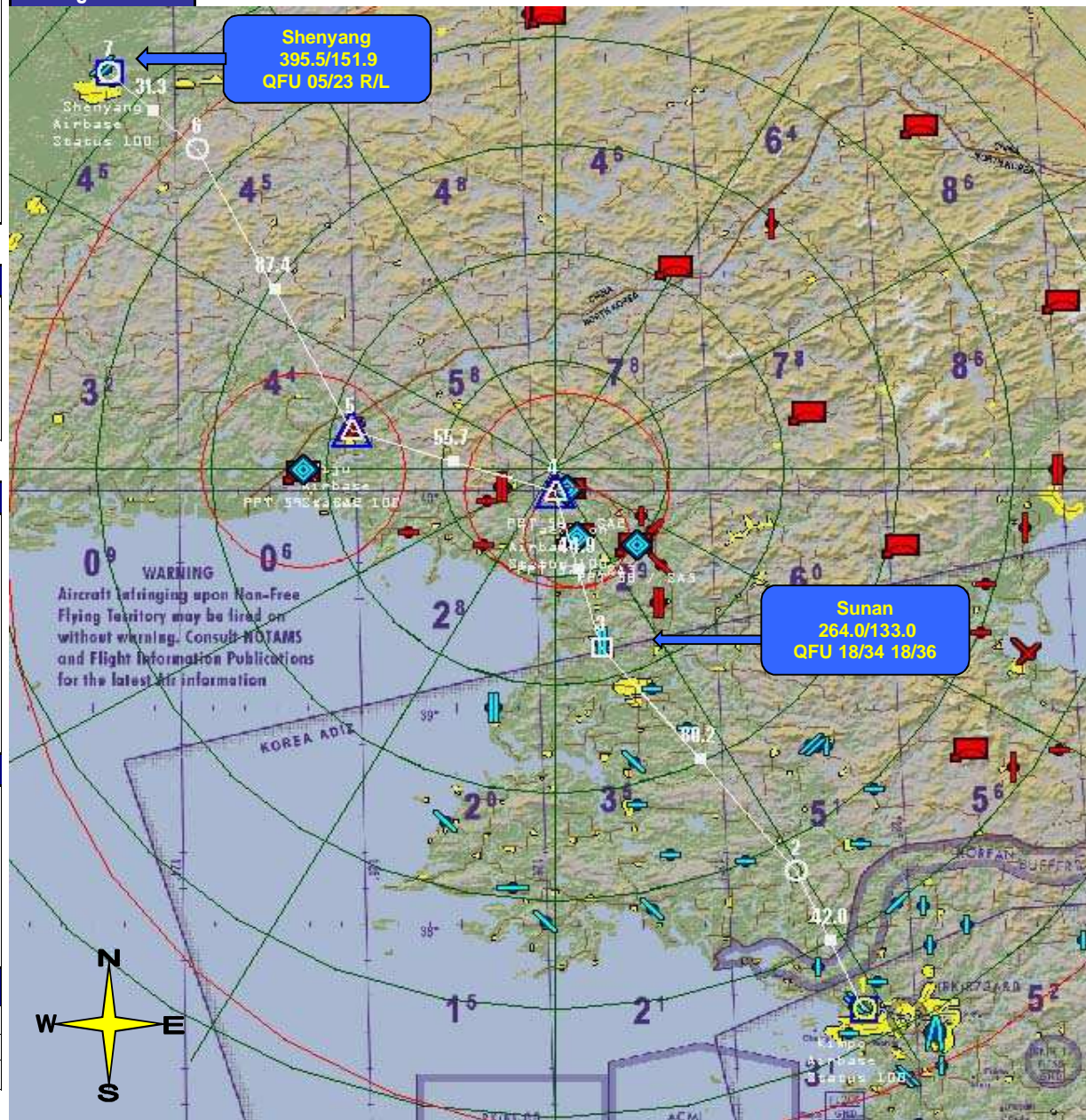
Package summary

Leader Pck :

Deputy :

C/S	ACFT	TASK	Datalink	Lead	#2	Lead PI	#4
FALCON	4	ESCORT	21-22-23-24				
FURY	4	SEAD ESCORT	31-32-33-34				
COWBOY1	4	STRIKE	11-12-13-14				
CHALIS	1		41				

Flight Plan



Page 1		DATACARD									
ATIS		RKSS INFO: D 0525LT ILS RWY32L TL180 360/0KT CAVOK 12/ 7 Q1034 NOSIG									
Airbase	Airbase	TCN	UHF	VHF	Elv	RWY	ILS				
	DEP	Kimpo	83 X	240.900	118.050	96	14R	110.10			
	ARR	Shenyang	88 X	395.500	151.900	262	05R	---			
	ALTN	R103	15 Y	236.600	122.600	135	09	---			
Flight	Position	Name	IDM	TCN	TO	LND	Notes:				
	1 Lead		2-1								
	2 Wing		2-2								
	3 Element		2-3								
	4 Wing		2-4								
Package	Callsign Pack 1027		AC Type	UHF	VHF	IDM	TCN	Task			
	Cowboy 1		4 F-16C-52			1		Deep Strike			
	X Falcon 1		4 F-16C-52			2		Escort			
	Fury 1		4 F-16C-52			3		SEAD Escort			
	Chalis 1		1 E-3			4		AWACS			
Flightplan	STPT	Action	TOS	HDG	DIST	KIAS	ALT	Fuel	Formation		
	1	T/O	06:00:00	---	---	---	---	12932	Spread		
	2	Escort	06:07:10	334	41.3	345	10000	12312	Spread		
	3	Nav	06:18:19	322	80.4	430	25000	11106	Spread		
	4	Nav	06:24:15	346	42.8	430	25000	10464	Spread		
	5	Split	06:32:06	288	56.7	430	25000	9614	Spread		
	6	Escort	06:44:33	335	89.6	430	25000	8270	Spread		
	7	Land	06:49:11	304	33.4	430	0	7602	Spread		
	8	Land	---	144	330.1	---	---	1000	---		
	9										
	10										
	11										
	12										
	13										
	14										
	15										
	16										
	17										
	18										
	19										
	20										
	21										
	22										
	23										
24											

Page 2		DATACARD							
126524		Callsign	Falcon 1	Package	1027	Mission	Escort_me		
TO/Loadout	Config				TO Spec	13/ Mil	Fuel		
	A-A	6x A120C		Gross	37883	Vr	152	TO F	15084
	A-G			Drag	74	Refusal	200	Set F	
	ECM	1x AL119		ALLOW	100	MIL %	97 %	JOKER	
	Tanks	2x TK600		MSL	10000	MIL CLB	425/0.84	BINGO	1500
TGT	Primary					Second			
	DMPI					DMPI			
	Lat&Lon					Lat&Lon			
Weapon	Type					Profile 1		Rel Angle	45
	SNSR					Arm Delay	01.50	SGL/PAIR	PAIR
	OPS Time					Burst Alt	2000	Ripple	1
	Release					Fuse	NSTL	Spacing	175
Attack Type	None								
Delivery			VIP / VRP	OA1	OA2	PUP	Pull Hdg		
	TBRG						ATT		
	RNG						DA		
	ELV						Gs		
	Ingress Alt				Rel H			Turn	
	Ingress SPD				Rel S			HUD	
Support			AC Type	TACAN	UHF	LOC	Notes:		
	Tanker 1						06:07 - 06:20		
	Tanker 2								
	AWACS	Chalis1 - E-3				343 / 15			
	JSTAR								
	FAC								
ROE				Class	Altitudes	Notes:			
Stoplines									
Mission Notes:									

Page 1		DATACARD							
ATIS		RKSS INFO: D 0525LT ILS RWY32L TL180 360/0KT CAVOK 12/ 7 Q1034 NOSIG							
Airbase	Airbase	TCN	UHF	VHF	Eiv	RWY	ILS		
	DEP	Kimpo	83 X	240.900	118.050	96	14R	110.10	
	ARR	Shenyang	88 X	395.500	151.900	262	05R	---	
	ALTN	R103	15 Y	236.600	122.600	135	09	---	
Flight	Position	Name	IDM	TCN	TO	LND	Notes:		
	1 Lead		3-1						
	2 Wing		3-2						
	3 Element		3-3						
	4 Wing		3-4						
Package	Callsign Pack 1027		AC Type	UHF	VHF	IDM	TCN	Task	
	Cowboy 1		4 F-16C-52			1		Deep Strike	
	Falcon 1		4 F-16C-52			2		Escort	
	X Fury 1		4 F-16C-52			3		SEAD Escort	
	Chalis 1		1 E-3			4		AWACS	
Flightplan	STPT	Action	TOS	HDG	DIST	KIAS	ALT	Fuel	Formation
	1	T/O	06:00:30	---	---	---	---	11587	Spread
	2	Push	06:07:49	335	41.8	340	9500	10960	Spread
	3	Nav	06:18:35	322	79.9	445	27000	10161	Spread
	4	SEAD	06:24:26	346	43.3	440	27000	9728	Spread
	5	SEAD	06:31:54	288	56.7	455	27000	9161	Spread
	6	Nav	06:43:51	335	89.1	445	27000	8270	Spread
	7	Land	06:48:19	304	33.4	445	0	7602	Spread
	8	Land	---	144	330.1	---	---	1000	---
	9								
	10								
	11								
	12								
	13								
	14								
	15								
	16								
	17								
	18								
	19								
	20								
	21								
	22								
	23								
24									

Page 2		DATACARD							
126524		Callsign	Fury 1	Package	1027	Mission	Escort_me		
TO/Loadout	Config					TO Spec	13/ Mil	Fuel	
	A-A	4x A120C		Gross	38799	Vr	154	TO F	15084
	A-G	2x AG88		Drag	82	Refusal	200	Set F	
	ECM	1x AL119		ALOW	100	MIL %	97 %	JOKER	
	Tanks	2x TK600		MSL	10000	MIL CLB	425/0.84	BINGO	1500
TGT	Primary					Second			
	DMPI					DMPI			
	Lat&Lon					Lat&Lon			
Weapon	Type					Profile 1		Rel Angle	45
	SNSR					Arm Delay	01.50	SGL/PAIR	PAIR
	OPS Time					Burst Alt	2000	Ripple	1
	Release					Fuse	NSTL	Spacing	175
Attack Type	None								
Delivery	VIP / VRP		OA1	OA2	PUP	Pull Hdg			
	TBRG						ATT		
	RNG						DA		
	ELV						Gs		
	Ingress Alt			Rel H			Turn		
Ingress SPD			Rel S			HUD			
Support	AC Type		TACAN	UHF	LOC	Notes:			
	Tanker 1					06:07 - 06:20			
	Tanker 2								
	AWACS	Chalis1 - E-3			343 / 15				
	JSTAR								
FAC									
Stoplans	ROE		Class	Altitudes		Notes:			
Mission Notes:									

Page 1		DATACARD								
ATIS		RKSS INFO: D 0525LT ILS RWY32L TL180 360/0KT CAVOK 12/ 7 Q1034 NOSIG								
Airbase	Airbase	TCN	UHF	VHF	Eiv	RWY	ILS			
	DEP	Kimpo	83 X	240.900	118.050	96	32L	108.30		
	ARR	Shenyang	88 X	395.500	151.900	262	05R	---		
	ALTN	R103	15 Y	236.600	122.600	135	09	---		
Flight	Position	Name	IDM	TCN	TO	LND	Notes:			
	1 Lead		1-1							
	2 Wing		1-2							
	3 Element		1-3							
	4 Wing		1-4							
Package	Callsign Pack 1027		AC Type	UHF	VHF	IDM	TCN	Task		
	X Cowboy 1		4 F-16C-52			1		Deep Strike		
	Falcon 1		4 F-16C-52			2		Escort		
	Fury 1		4 F-16C-52			3		SEAD Escort		
	Chalis 1		1 E-3			4		AWACS		
Flightplan	STPT	Action	TOS	HDG	DIST	KIAS	ALT	Fuel	Formation	
	1	T/O	05:59:29	---	---	---	---	12924	Spread	
	2	Push	06:08:01	334	41.3	290	10000	12305	Spread	
	3	Nav	06:22:18	321	81.4	340	21000	11084	Spread	
	4	Strike	06:29:40	347	42.0	340	21000	10454	Spread	
	5	Strike	06:39:40	289	57.0	340	21000	9599	Spread	
	6	Split	06:55:27	335	88.6	335	20500	8270	Spread	
	7	Land	07:01:21	304	33.4	340	0	7602	Spread	
	8	Land	---	144	330.1	---	---	1000	---	
	9									
	10									
	11									
	12									
	13									
	14									
	15									
	16									
	17									
	18									
	19									
	20									
	21									
	22									
	23									
24										

Page 2		DATACARD								
126524		Callsign	Cowboy 1	Package	1027	Mission	Escort_me			
TO/Loadout	Config					TO Spec	13/ Mil	Fuel		
	A-A	4x A120C		Gross	40099	Vr	156	TO F	15084	
	A-G	6x BL107		Drag	150	Refusal	200	Set F		
	ECM	1x AL119		ALOW	100	MIL %	97 %	JOKER		
	Tanks	2x TK600		MSL	10000	MIL CLB	425/0.84	BINGO	1500	
TGT	Primary					Second				
	DMPI					DMPI				
	Lat&Lon					Lat&Lon				
Weapon	Type					Profile 1		Rel Angle	45	
	SNSR					Arm Delay	01.50	SGL/PAIR	PAIR	
	OPS Time					Burst Alt	2000	Ripple	1	
	Release					Fuse	NSTL	Spacing	175	
Attack Type	None									
Delivery			VIP / VRP	OA1	OA2	PUP	Pull Hdg			
	TBRG							ATT		
	RNG							DA		
	ELV							Gs		
	Ingress Alt					Rel H			Turn	
Ingress SPD					Rel S			HUD		
Support			AC Type	TACAN	UHF	LOC	Notes:			
	Tanker 1							06:07 - 06:20		
	Tanker 2									
	AWACS		Chalis1 - E-3				343 / 15			
	JSTAR									
FAC										
Stoplines	ROE			Class	Altitudes		Notes:			
Mission Notes:										

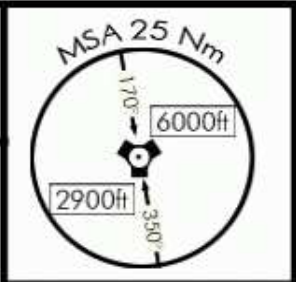
Page 1		DATACARD								
ATIS		RKSS INFO: D 0525LT ILS RWY32L TL180 360/0KT CAVOK 12/ 7 Q1034 NOSIG								
Airbase	Airbase	TCN	UHF	VHF	Eiv	RWY	ILS			
	DEP	Kimpo	83 X	240.900	118.050	96	14R	110.10		
	ARR	Shenyang	88 X	395.500	151.900	262	05R	---		
	ALTN	R103	15 Y	236.600	122.600	135	09	---		
Flight	Position	Name	IDM	TCN	TO	LND	Notes:			
	1 Lead		4-1							
	2 Wing		4-2							
	3 Element		4-3							
	4 Wing		4-4							
Package	Callsign Pack 1027		AC Type	UHF	VHF	IDM	TCN	Task		
	Cowboy 1		4 F-16C-52			1		Deep Strike		
	Falcon 1		4 F-16C-52			2		Escort		
	Fury 1		4 F-16C-52			3		SEAD Escort		
	X Chalis 1		1 E-3			4		AWACS		
Flightplan	STPT	Action	TOS	HDG	DIST	KIAS	ALT	Fuel	Formation	
	1	T/O	06:00:00	---	---	---	---	11380	Spread	
	2	ELINT	06:07:20	335	42.8	350	26000	10952	Spread	
	3	Nav	06:20:53	321	79.1	350	26000	10161	Spread	
	4	Nav	06:28:19	346	43.3	350	26000	9728	Spread	
	5	Nav	06:38:03	288	56.7	350	26000	9161	Spread	
	6	ELINT	06:53:20	335	89.1	350	26000	8270	Spread	
	7	Land	06:59:04	304	33.4	345	0	7602	Spread	
	8	Land	---	144	330.1	---	---	1000	---	
	9									
	10									
	11									
	12									
	13									
	14									
	15									
	16									
	17									
	18									
	19									
	20									
	21									
	22									
	23									
24										

Page 2		DATACARD							
126524		Callsign	Chalis 1	Package	1027	Mission	Escort_me		
TO/Loadout	Config				TO Spec			Fuel	
	A-A				Gross	26662	Vr	TO F	7162
	A-G				Drag	1	Refusal	Set F	
	ECM				ALOW	100	MIL %	JOKER	
	Tanks				MSL	10000	MIL CLB	BINGO	1500
TGT	Primary					Second			
	DMPI					DMPI			
	Lat&Lon					Lat&Lon			
Weapon	Type					Profile 1	Rel Angle	45	
	SNSR					Arm Delay	01.50	SGL/PAIR	PAIR
	OPS Time					Burst Alt	2000	Ripple	1
	Release					Fuse	NSTL	Spacing	175
Attack Type	None								
Delivery			VIP / VRP	OA1	OA2	PUP	Pull Hdg		
	TBRG						ATT		
	RNG						DA		
	ELV						Gs		
	Ingress Alt				Rel H			Turn	
	Ingress SPD				Rel S			HUD	
Support			AC Type	TACAN	UHF	LOC	Notes:		
	Tanker 1						06:07 - 06:20		
	Tanker 2								
	AWACS	Chalis1 - E-3			343 / 15				
	JSTAR								
	FAC								
Stoplines	ROE		Class	Altitudes		Notes:			
Mission Notes:									

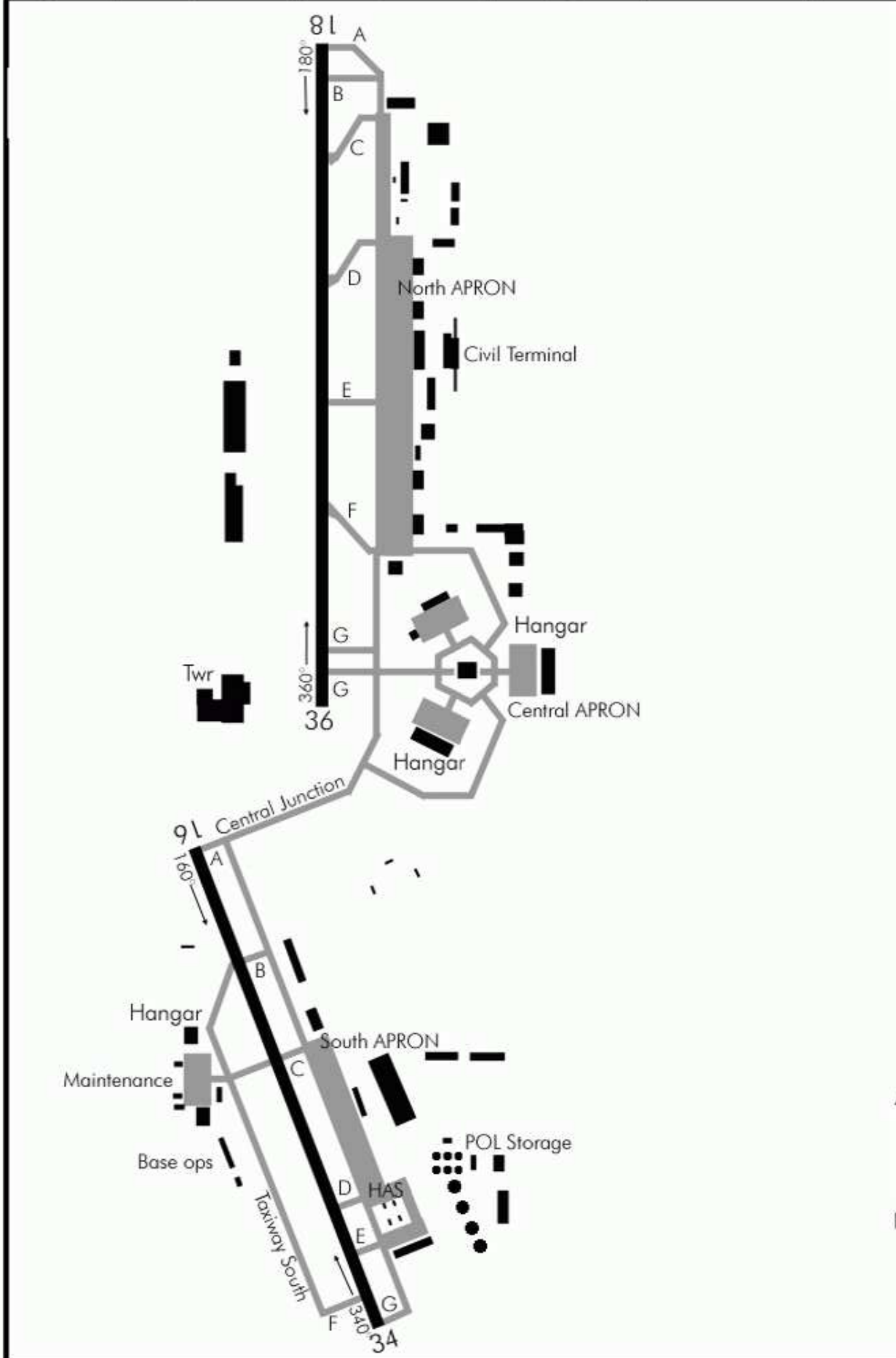
AIRPORT DIAGRAM

Date: 27 May 2011

TACAN: 051X	TWR: 264.0/133.0	TRANS LEVEL: FL140	TRANS ALT: 14000 Ft	GPS: N39°15,720' E126°21.840'	ELEV: 174'
----------------	---------------------	-----------------------	------------------------	-------------------------------------	---------------



ILS FREQ:
RWY 16 : N.A.
RWY 34 : 110.3
RWY 36 : 109.5



AIRPORT DIAGRAM

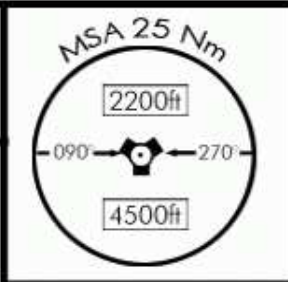
NOT FOR REAL NAVIGATION - FALCON 4 BMS ONLY

AIRPORT DIAGRAM

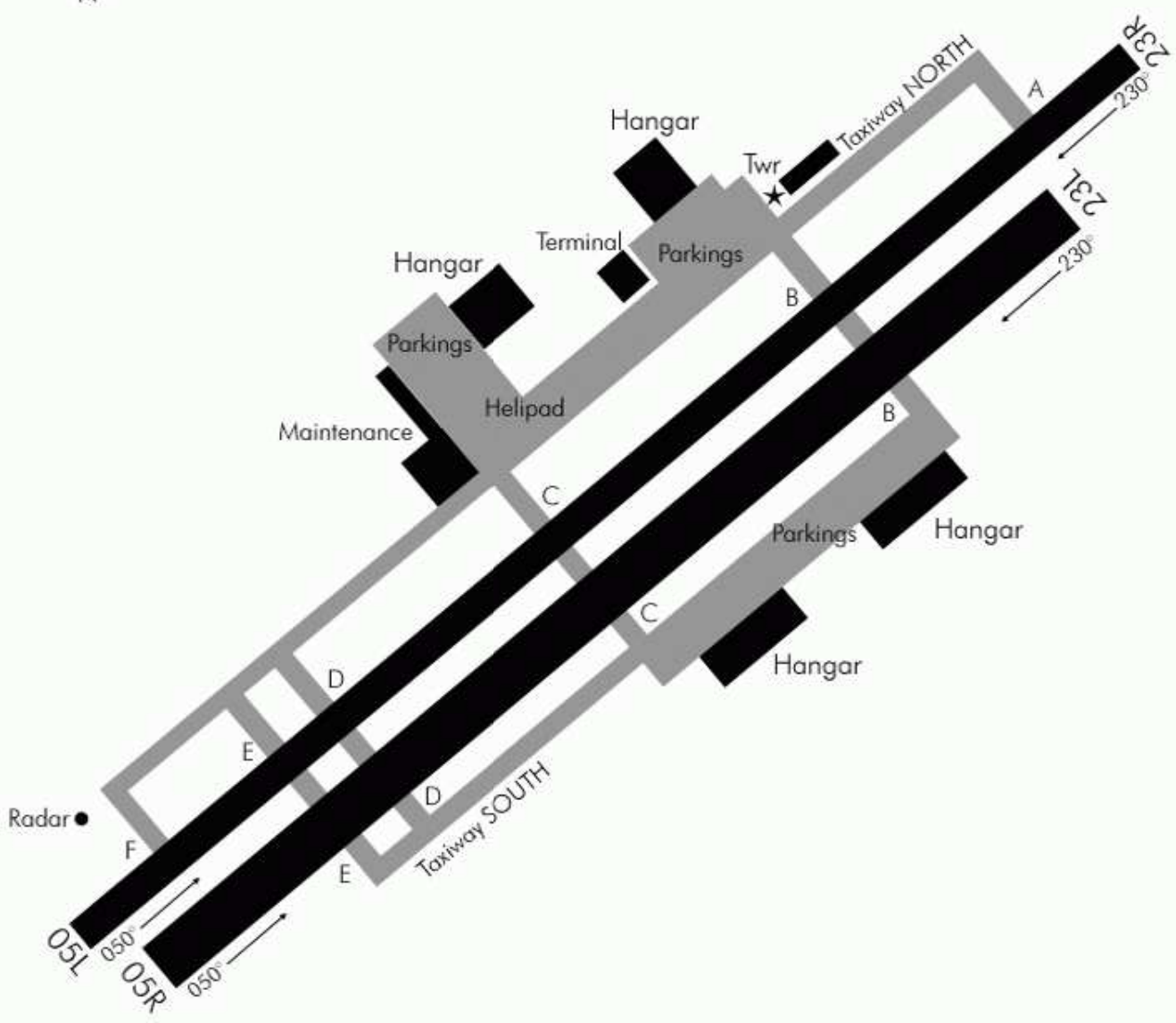
Date: 1 June 2011

PEOPLE'S REPUBLIC OF CHINA

TACAN: 088X	TWR: 395.5/151.9	TRANS LEVEL: FL140	TRANS ALT: 14000ft	GPS: N41°55,587' E123°37.946'	ELEV: 254'
----------------	---------------------	-----------------------	-----------------------	-------------------------------------	---------------



POL storage
• •



AIRPORT DIAGRAM