

DATA CARD



C/SIGN :

Snakeshit

Air Task Order

Conception : Taldek

Depuis plusieurs mois la Corée du Nord tente de mettre au point un missile balistique longue portée. Nos espions sur place nous informe que le chef de projet (Tae Pen-Chong) effectue en ce moment une tournée d'inspection de l'usine secrète devant produire le futur missile nord coréen. Votre mission consiste à frapper cette usine lors de cette inspection afin d'éliminer les moyens de productions et avec un peu de chance la tête pensante de ce projet.

Tactical Situation

Theatre : Korea

Air threats

Ground Threats

Escadron de J-7 sur Haeju.
Escadron de mig-23 sur Kuam-ni.
Escadron de mig-29A sur Panghyon.

Sa-2 et Sa-5 sur la navigation.
Une série de Sa-5 et Sa-2 sur la route de retour devront être traité.

Mission Managment

IN -Coordination - Commit - R.O.E.

Armement imposé sauf bidon Tot impératif frappe entre 1h50 et 1h55 pour les Cowboy. L'approche se fera à basse altitude (<1000 Ft) jusqu'au point 12 la frappe se fera sur le point 13 avec reprise d'altitude de tout le package sur le retour afin d'être en position favorable pour éliminer les menaces air-air qui risque d'être présente après l'attaque.

Vol Falcon : Protection du package des menaces air-air

Vol Fury : Protection du package des menaces air-sol

Vol Cowboy : Destruction de l'usine enterrée

OUT - Coordination - RTB - Landing

Rassemblement package et RTB Selon priorité BINGO et/ou avaries. Les conditions météo très mauvaise imposeront peut-être l'utilisation de l'ILS.

Airbases

Type	Location	TWR	TCN	RNG	ILS	QFU	N	E
Main	Seoul	237.1 / 126.2	046X	25	110.9 (19)	19/01-18/36	37°26.97'	128°07.13'
Emer	Kimpo	240.9 / 118.05	083X	25	R)108.3 (14/32-L/R	37°36.868'	127°42.801'
Alter	Singal	233.8 / 122.8	046X	Dme08	R190°	18/36	37°19.42'	128°07.97'

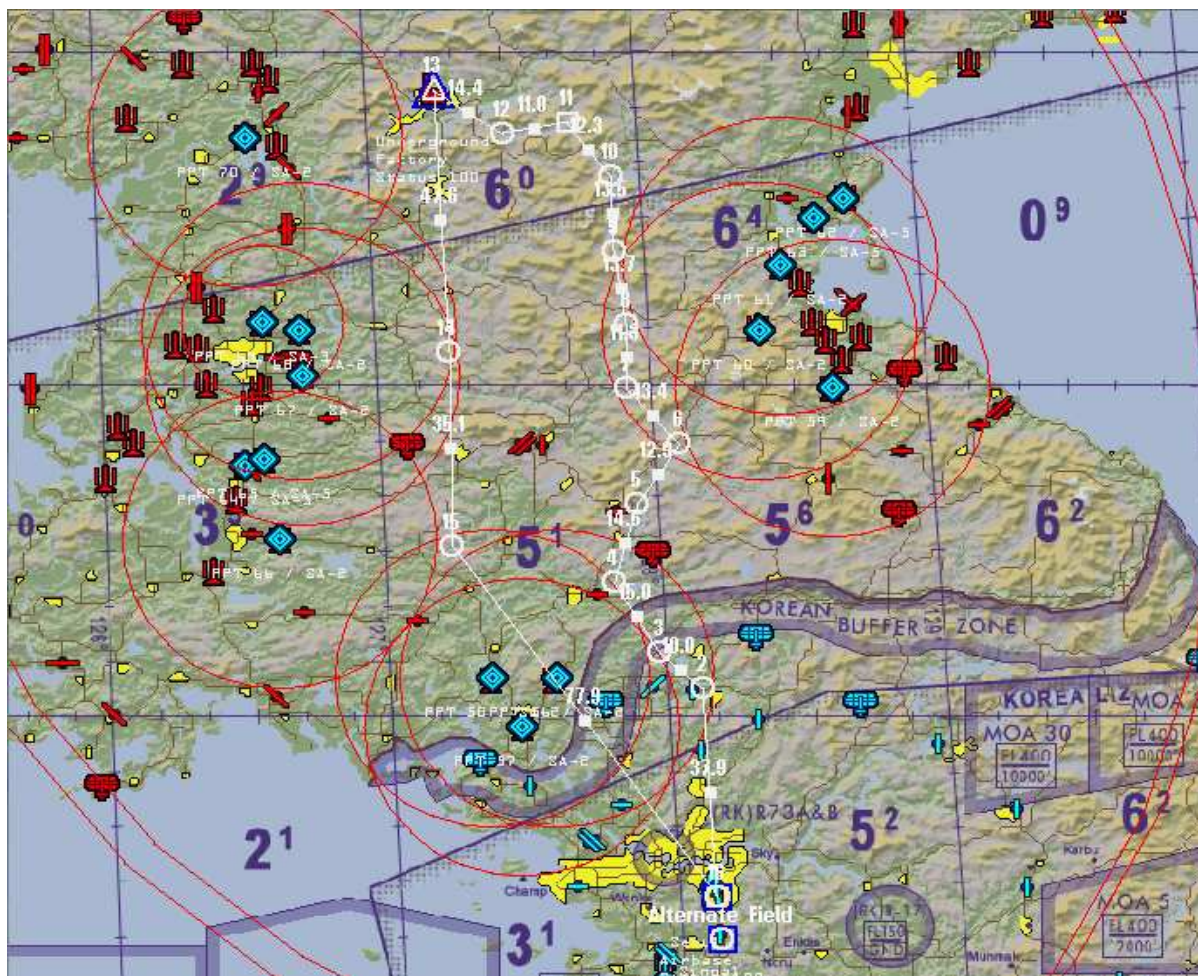
Package summary

Leader Pck :

Deputy :

C/S	ACFT	TASK	Datalink	Lead	#2	Lead PI	#4
FALCON	4	ESCORT	21-22-23-24				
FURY	4	SEAD STRIKE	31-32-33-34				
COWBOY1	4	STRIKE	11-12-13-14				
-	-	-	-				

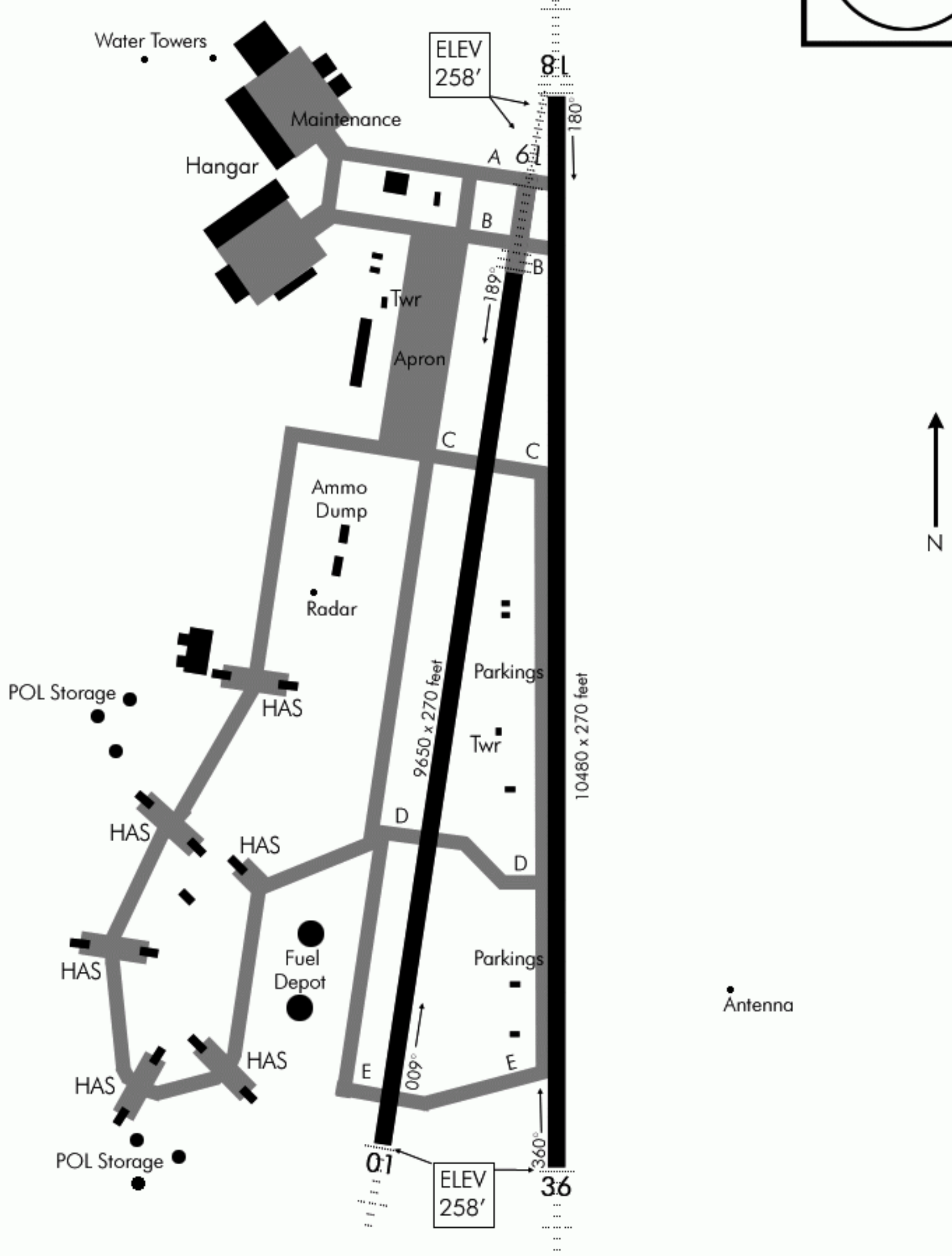
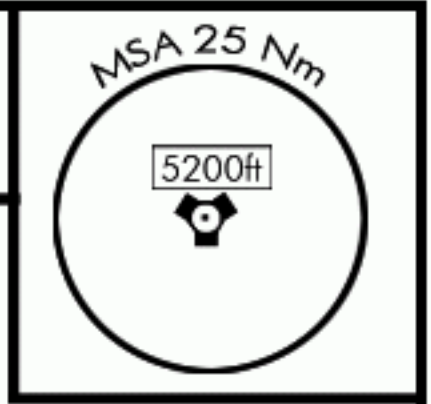
Flight Plan



AIRPORT DIAGRAM

20 Dec 09

TACAN: 046X	TWR: 237.1/126.2	TRANS LEVEL FL140	TRANS. ALT 14.000ft	GPS: N37°26,97' E128°07.13'	ELEV: 258'
----------------	---------------------	----------------------	------------------------	-----------------------------------	---------------



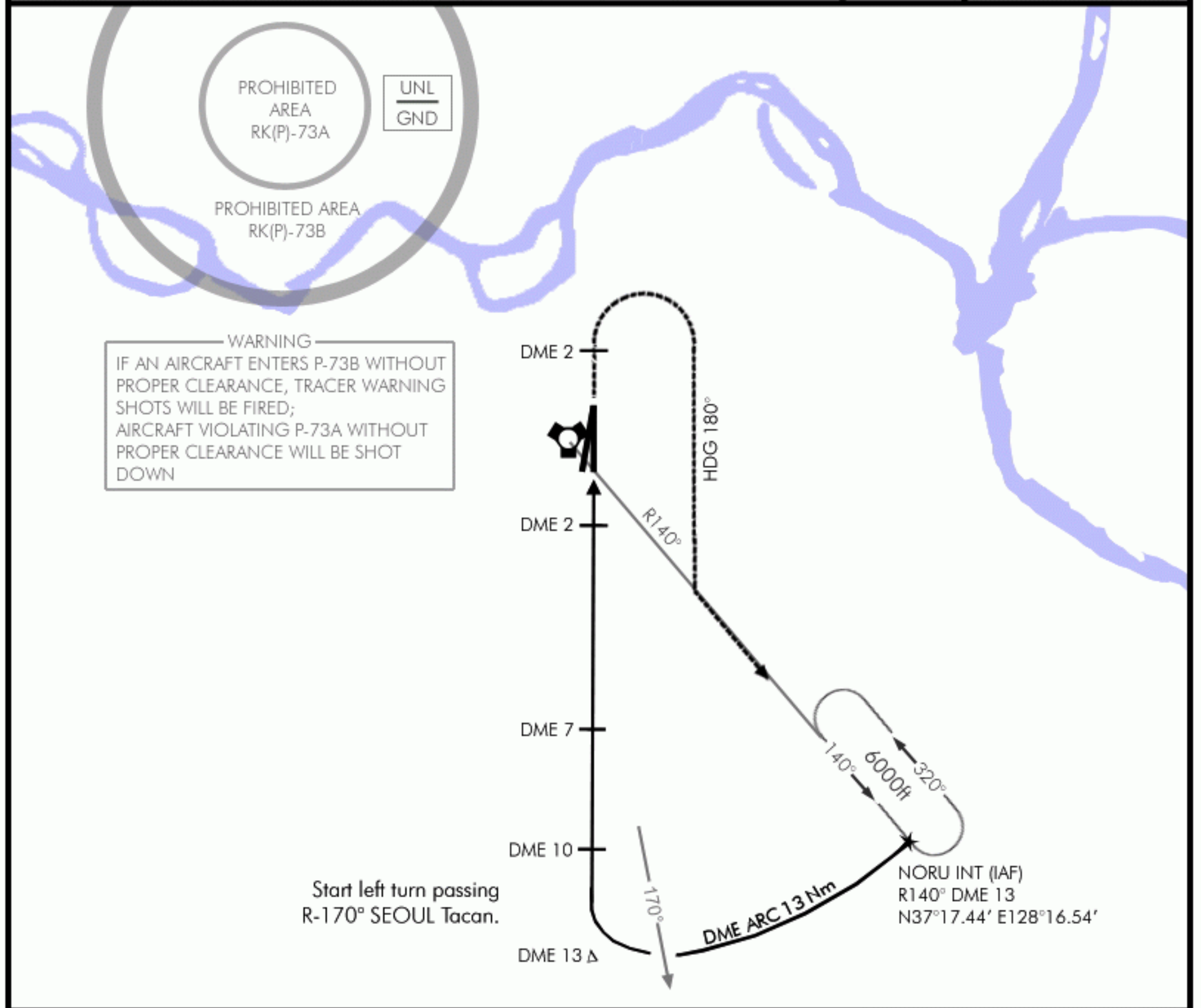
TACAN RWY 36

20 Dec 09

TACAN: 046X	TWR: 237.1/126.2	TACAN DA(H): 751' (493' AGL)	TACAN RAD: 360°	GPS: N37°26.97' E128°07.13'	ELEV: 258'	
----------------	---------------------	---------------------------------	--------------------	-----------------------------------	---------------	--

MISSED APPROACH: Climb straight ahead until DME 2 or reaching 1700ft, then RIGHT climbing turn to 6000 heading 180° to intercept Radial 140° outbound and hold at NORU fix at DME 13.

MALSF
PAPI



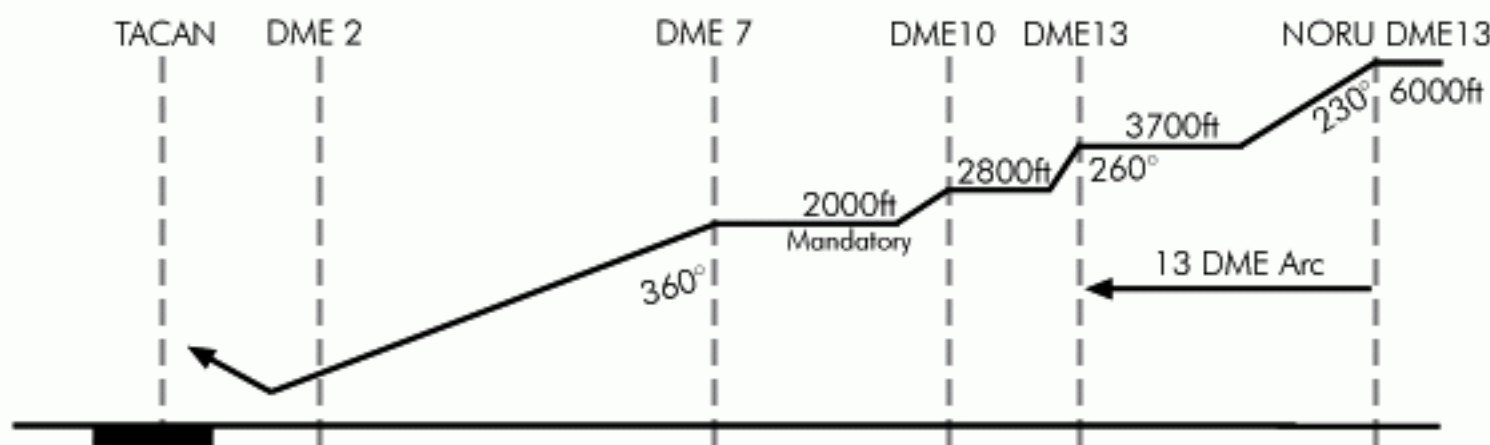
Start left turn passing R-170° SEOUL Tacan.

MINIMA:

TACAN: 751' (493' AGL)*
Vis: 300-1600m
at DME2

Circling: 951' (693' AGL)
Vis: 600-2000m
*When ALS inop, increase vis to 2000m

Transition Level : FL 140 - Transition Altitude : 14000ft



TACAN RWY 36

NOT FOR REAL NAVIGATION - FALCON 4 BMS ONLY

TACAN RWY 18

20 Dec 09

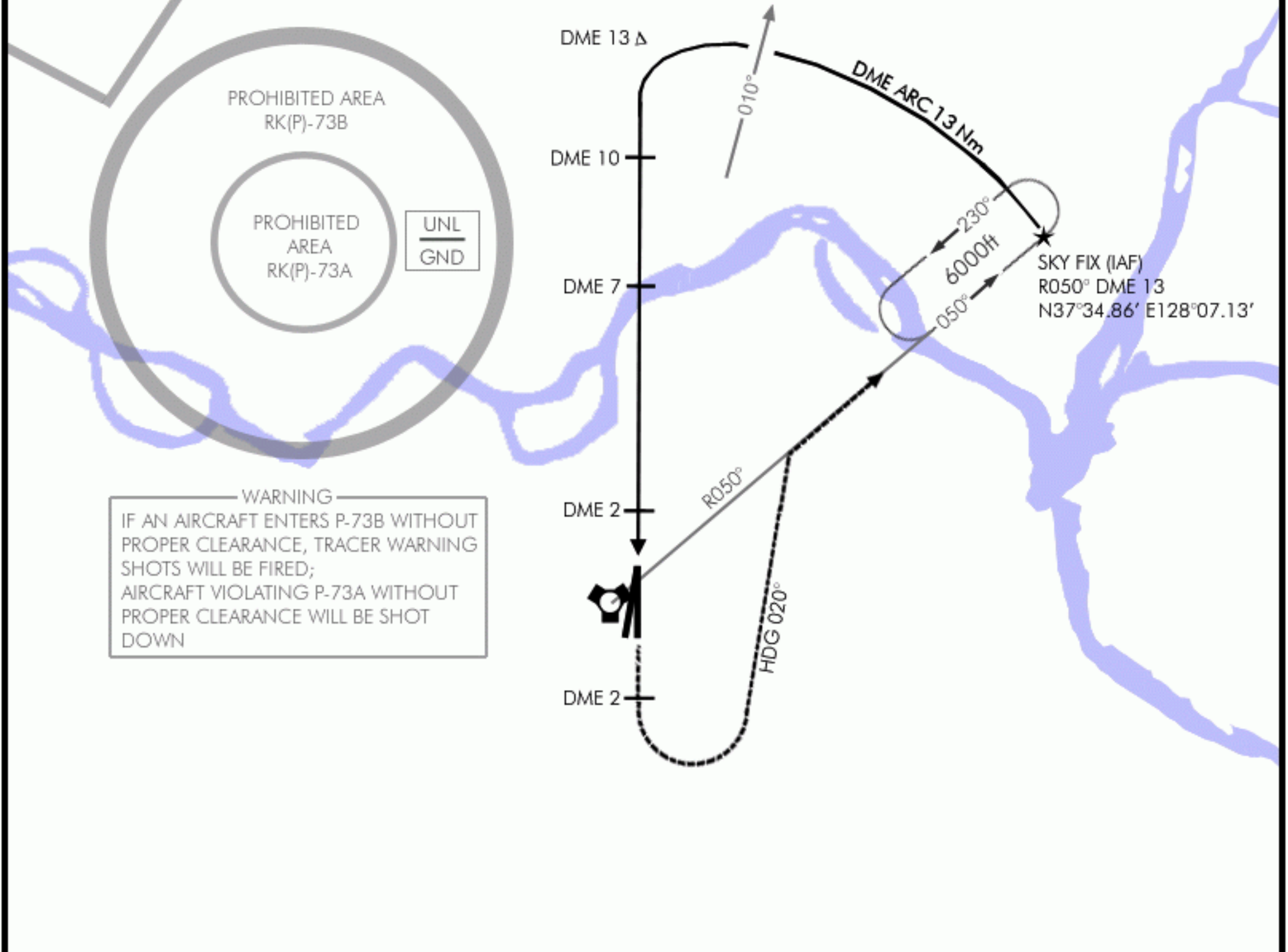
TACAN: 046X	TWR: 237.1/126.2	TACAN DA(H): 751' (493' AGL)	TACAN RAD: 180°	GPS: N37°26.97' E128°07.13'	ELEV: 258'	
----------------	---------------------	---------------------------------	--------------------	-----------------------------------	---------------	--

MISSED APPROACH: Climb straight ahead until DME 2 or reaching 1700ft, then LEFT climbing turn to 6000 heading 020° to intercept Radial 050° outbound and hold at SKY DME 13.

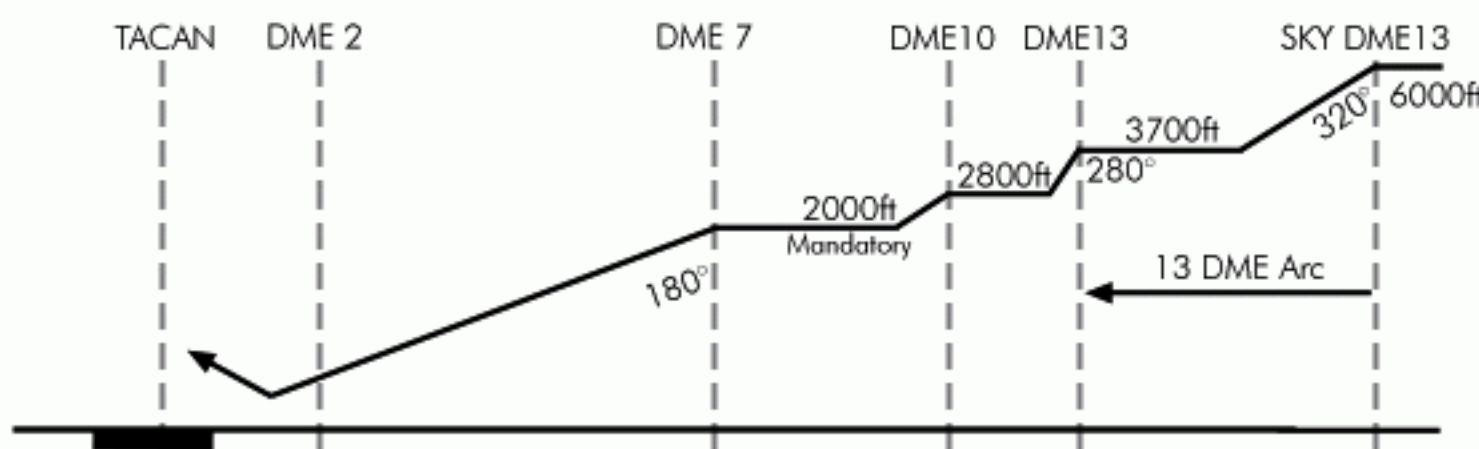
ALSF-1
PAPI

Caution: For turning from 13 DME arc onto final approach course do not overshoot to avoid penetrating P-73 prohibited area located right side of final approach course.

Start left turn passing R-010° SEOUL Tacan.



Transition Level : FL 140 - Transition Altitude : 14000ft



MINIMA:

TACAN: 751' (493' AGL)*
Vis: 300-1600m
at DME2

Circling: 951' (693' AGL)
Vis: 600-2000m

*When ALS inop, increase vis to 2000m

TACAN RWY 18

NOT FOR REAL NAVIGATION - FALCON 4 BMS ONLY

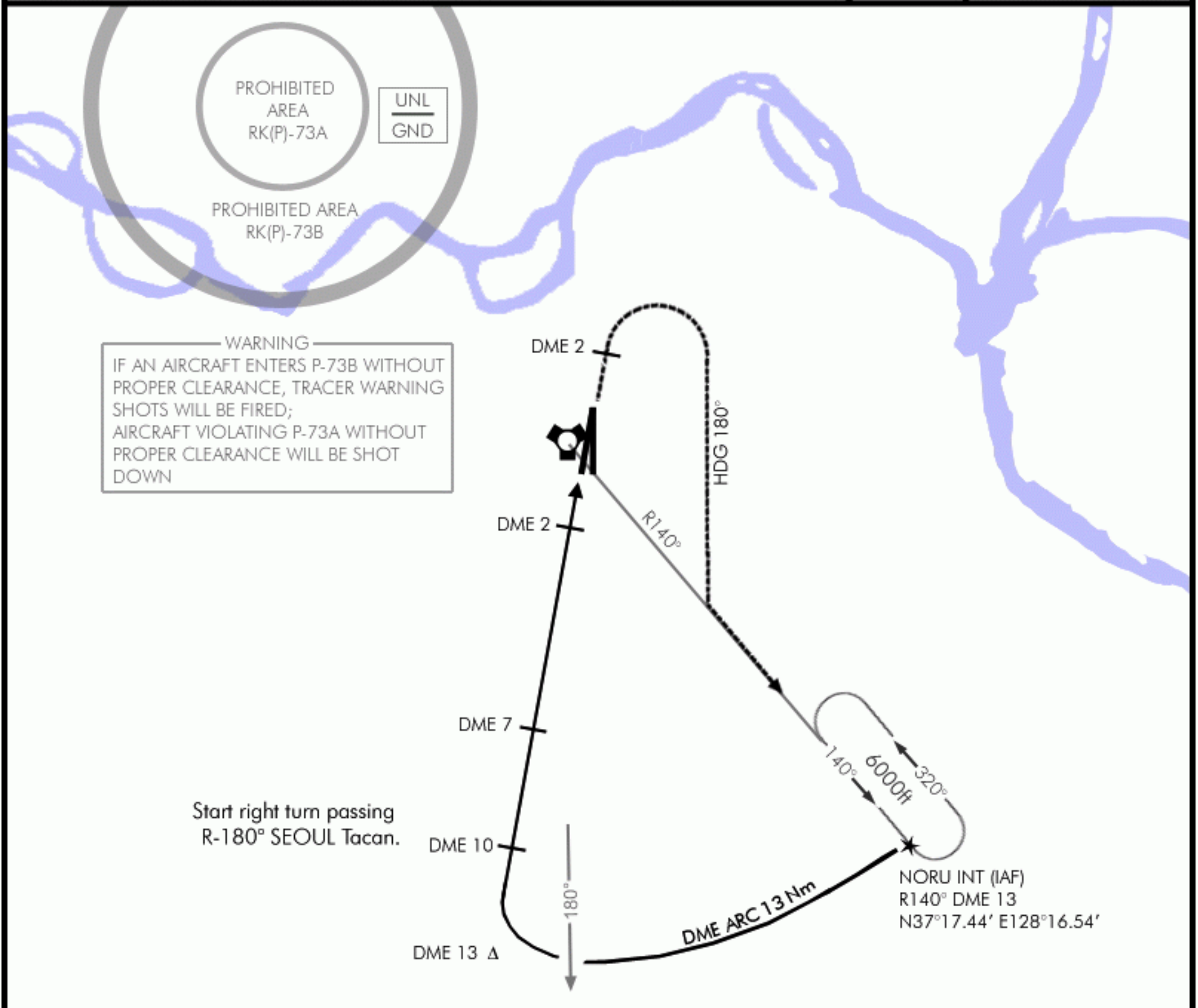
TACAN RWY 01

20 Dec 09

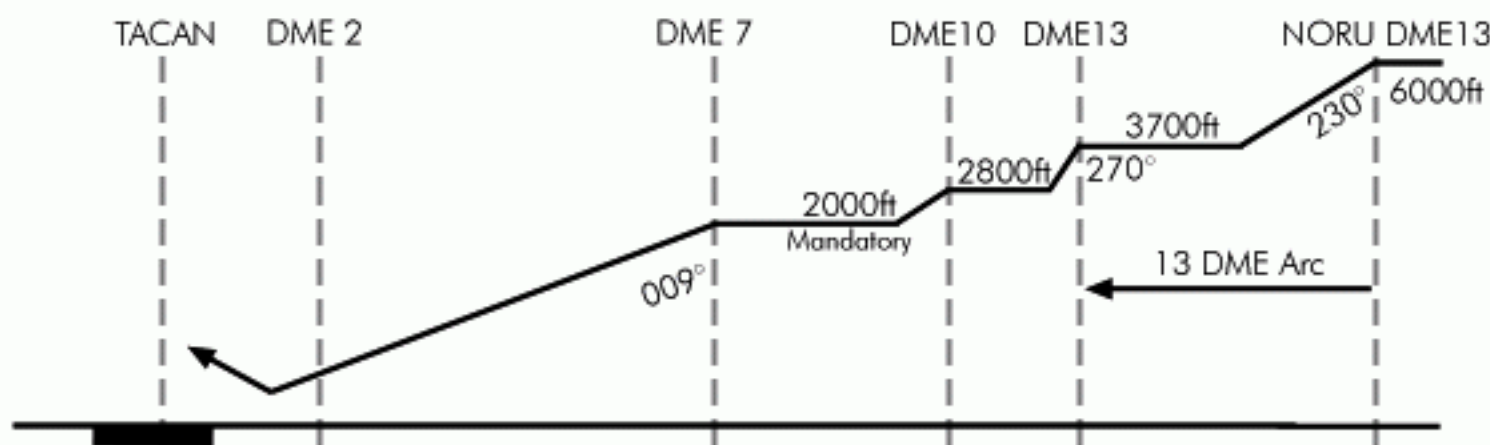
TACAN: 046X	TWR: 237.1/126.2	TACAN DA(H): 751' (493' AGL)	TACAN RAD: 009°	GPS: N37°26.97' E128°07.13'	ELEV: 258'	
----------------	---------------------	---------------------------------	--------------------	-----------------------------------	---------------	--

MISSED APPROACH: Climb straight ahead until DME 2 or reaching 1700ft, then RIGHT climbing turn to 6000 heading 180° to intercept Radial 140° outbound and hold at NORU fix at DME 13.

MALSF
PAPI



Transition Level : FL 140 - Transition Altitude : 14000ft



MINIMA:

TACAN: 751' (493' AGL)*
Vis: 300-1600m
at DME2

Circling: 951' (693' AGL)
Vis: 600-2000m

*When ALS inop, increase vis to 2000m

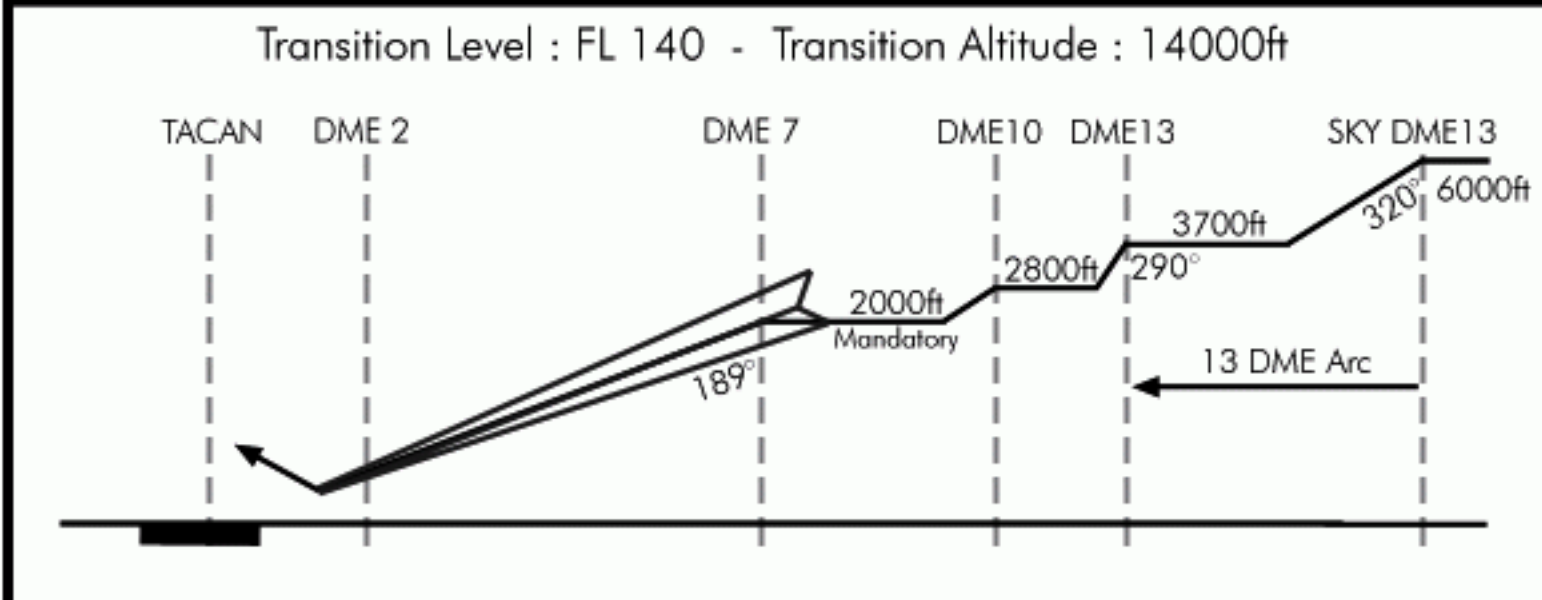
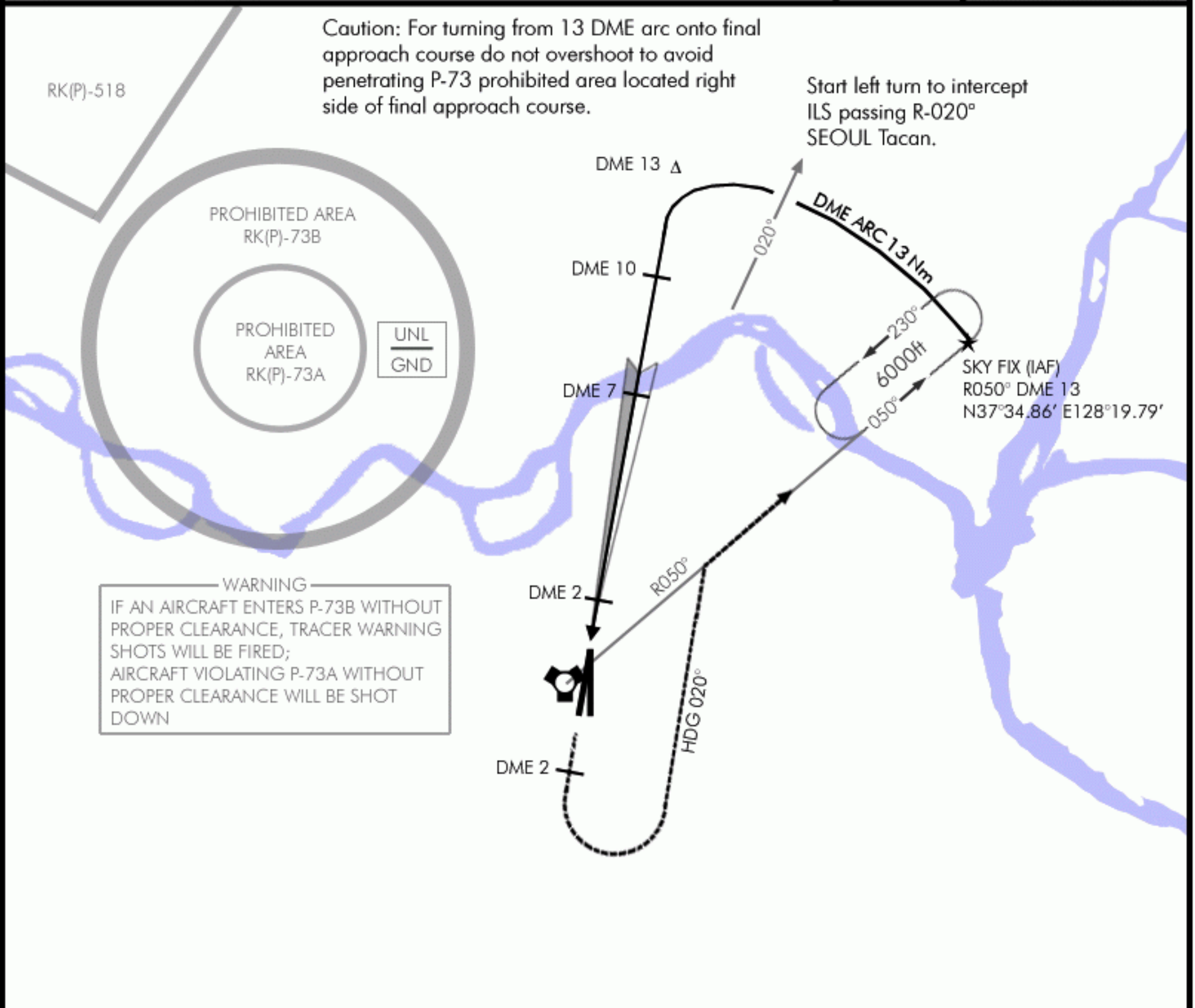
TACAN RWY 01

NOT FOR REAL NAVIGATION - FALCON 4 BMS ONLY

ILS RWY 19

20 Dec 09

TACAN: 046X	TWR: 237.1/126.2	ILS: 110.9	ILS DA(H) 488' (230' AGL)	LOC: 189°	GPS: N37°26,97' E128°07.13'	ELEV: 258'	
MISSED APPROACH: Climb straight ahead until DME 2 or reaching 1700ft, then LEFT climbing turn to 6000 heading 020° to intercept Radial 050° outbound and hold at SKY DME 13.						ALSF-1 	



MINIMA:

ILS: 488'(230'AGL)*
Vis: 200-800m

LOC: 751'(493' AGL)**
Vis: 300-1600m

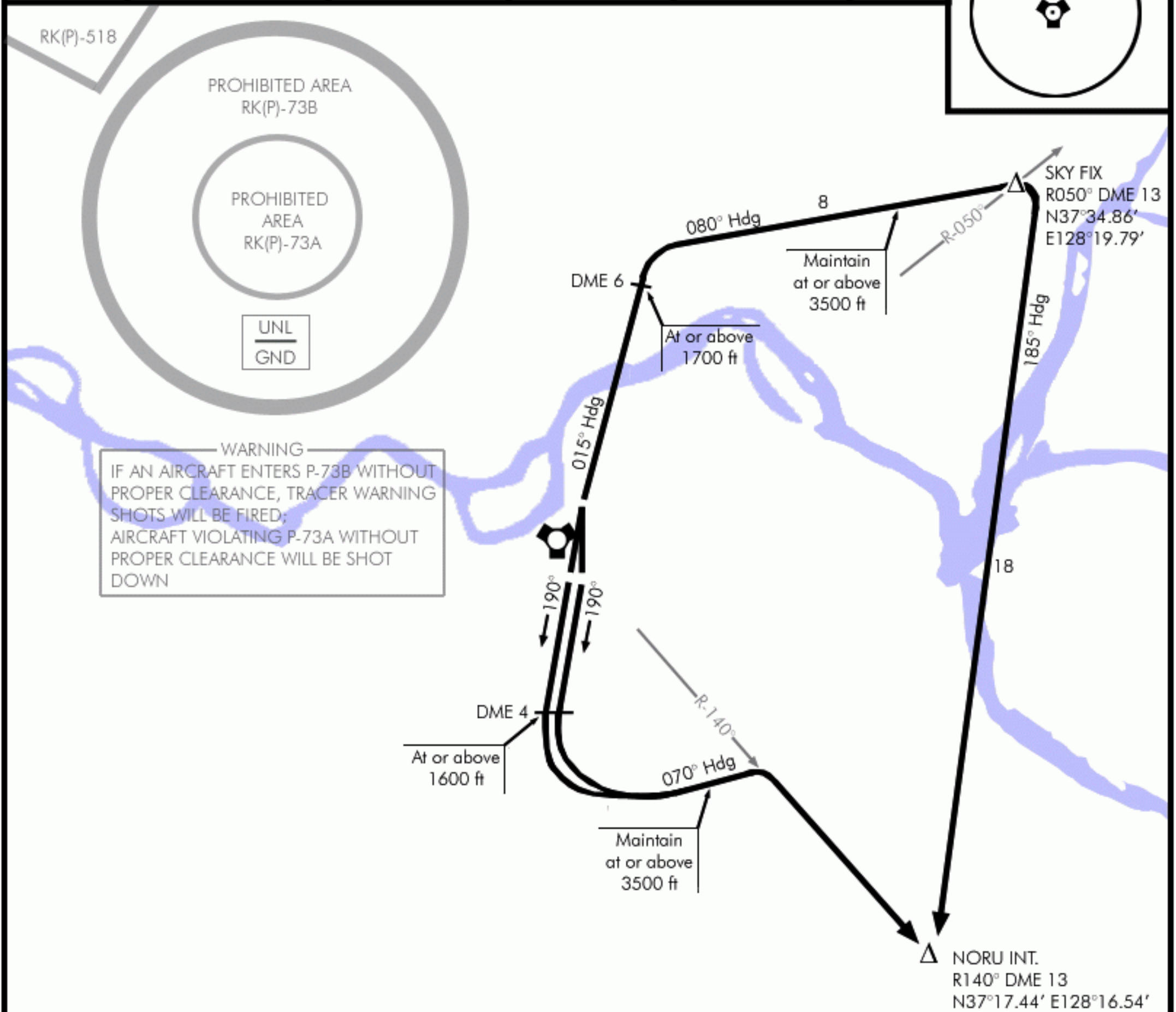
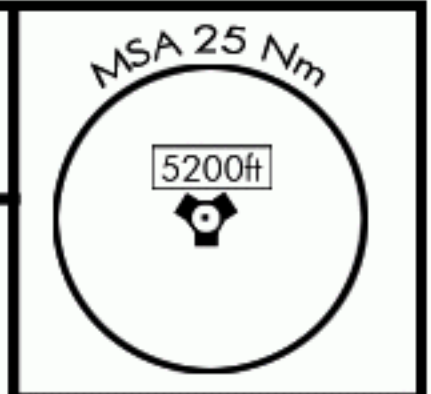
Circling: 951'(693'AGL)
Vis: 600-2000m

*When ALS inop, increase vis to 1200m
**When ALS inop, increase vis to 2000m

NORU ONE DEPARTURE

20 Dec 09

TACAN:	TWR:	TRANS. LEVEL	TRANS. ALT.	GPS:	ELEV:
046X	237.1/126.2	FL140	14.000ft	N37°26.97' E128°07.13'	258'



DEPARTURE ROUTE DESCRIPTION

TAKE-OFF RWYs 01/36: Climb on 015° heading until 6 DME, then right climbing turn on 080° heading to R-050°. Maintain at or above 3500ft. After crossing R-050°, turn right proceed to NORU int, Thence...

TAKE-OFF RWYs 18/19: Climb on 190° heading until 4 DME, then left climbing turn to 070° heading to intercept R-140°. Maintain at or above 3500ft track 190°. On R-140° Seoul Tacan, proceed to NORU int, Thence...