

DATA CARD



C/SIGN :

Mare_Nostrum_2

Air Task Order

Conception : Riftard

8 février 1981 : République du Minkistan . Des renseignements achetés à prix d'or au CF31 français nous confirme qu'un convoi de 4 tankers escorté de 2 destroyers classe spruance , vient de quitter la base navale de Nampo chez notre ennemi juré et se dirige à 20 noeuds plein ouest vers la haute mer . Une mission d'attaque de ce convoi vient de nous être ordonnée par notre président .Décollage dans 1 heure , il faut endommager les tankers pour les obliger à retourner au port .

Tactical Situation

Theatre : Korea

Air threats

Ground Threats

Mig 23 en alerte sur Sunan , Mig 21 en alerte sur Haeju , mig 19 en alerte sur Kwall

1 SA-5 sur Onch'on , bataillons d'infanterie mécanisée un peu partout

Mission Managment

IN -Coordination - Commit - R.O.E.

Take off 8:30

F-16 C block 52 , ordre d'entrée cockpit : cowboy , falcon , fury . Armement imposé : aim9M pour les Esco , Agm 88 pour falcon 1 et 2 pour détruire Sa-5 et radars des 2 destroyers, Agm 65 G pour falcon 3 et 4 pour endommager les 2 destroyers, Mk 82 snake-eyes pour les cowboys pour striker les 4 tankers. Attaque TBA conseillée pour les cowboys et falcon 3 et 4 , pour passer sous les Sam navals . Pas de TOT .

OUT - Coordination - RTB - Landing

Pas d'Awacs , pas de tanker de ravito , retour sur Seosan selon ordres du LP , alternate R110 airstrip , emergency R107 airstrip

Airbases

Type	Location	TWR	TCN	RNG	ILS	QFU	N	E
Main	Seosan	353.1 / 136.75	052X	50	11.5 (02R)	02/20-L/R	36°41.71'	127°19.74'
Emer	R107	233.8 / 122.8	094X	Dme51	R325°	18/36	37°46.37'	127°28.93'
Alter	R110	233.8 / 122.8	019X	Dme21	R245°	18/36	36°49.25'	127°39.68'

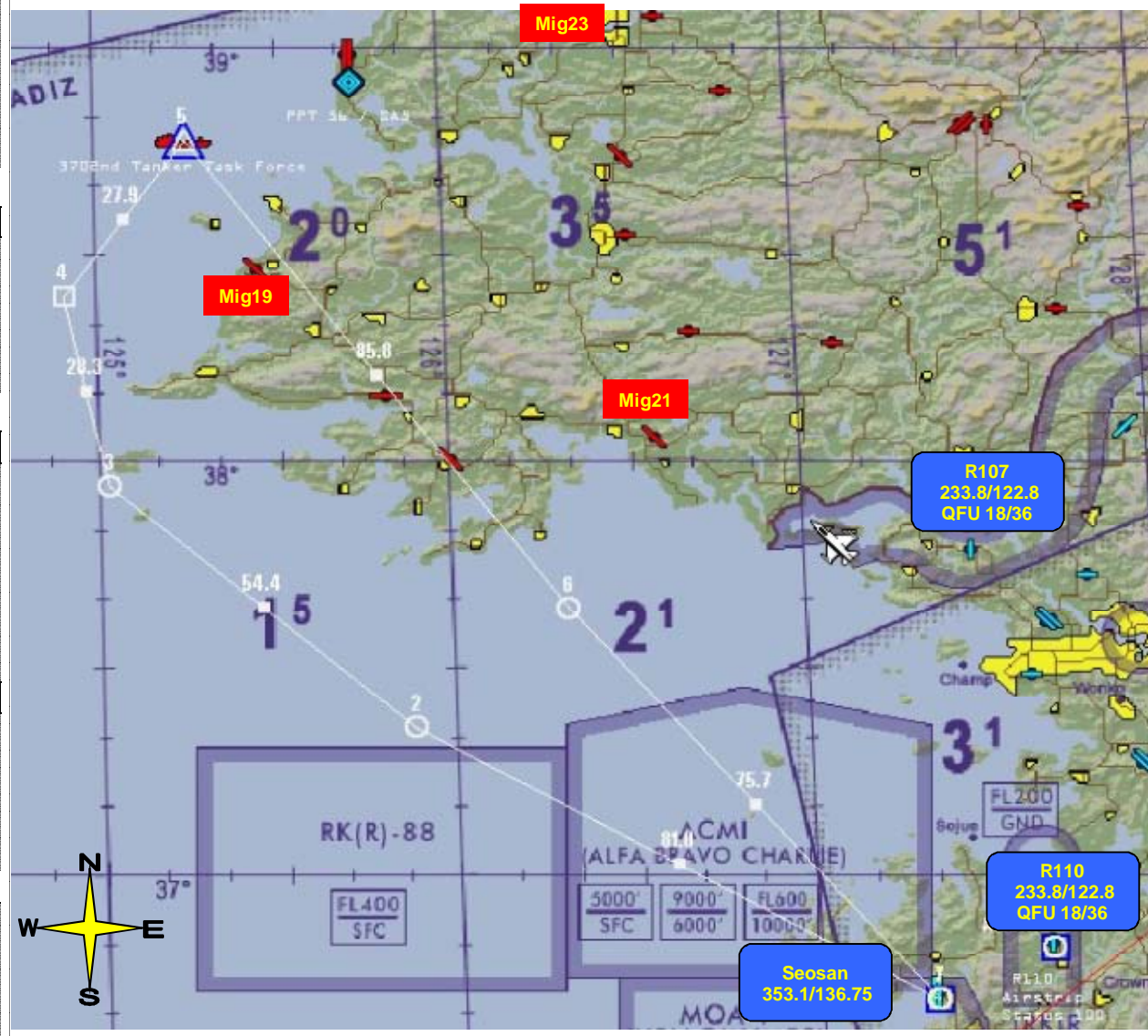
Package summary

Leader Pck :

Deputy :


C/S	ACFT	TASK	Datalink	Lead	#2	Lead PI	#4
COWBOY	4	STRIKE	11-12-13-14				
FALCON	4	SEAD ESCORT	21-22-23-24				
FURY	4	ESCORT	31-32-33-34				

Flight Plan



ILS RWY 02R

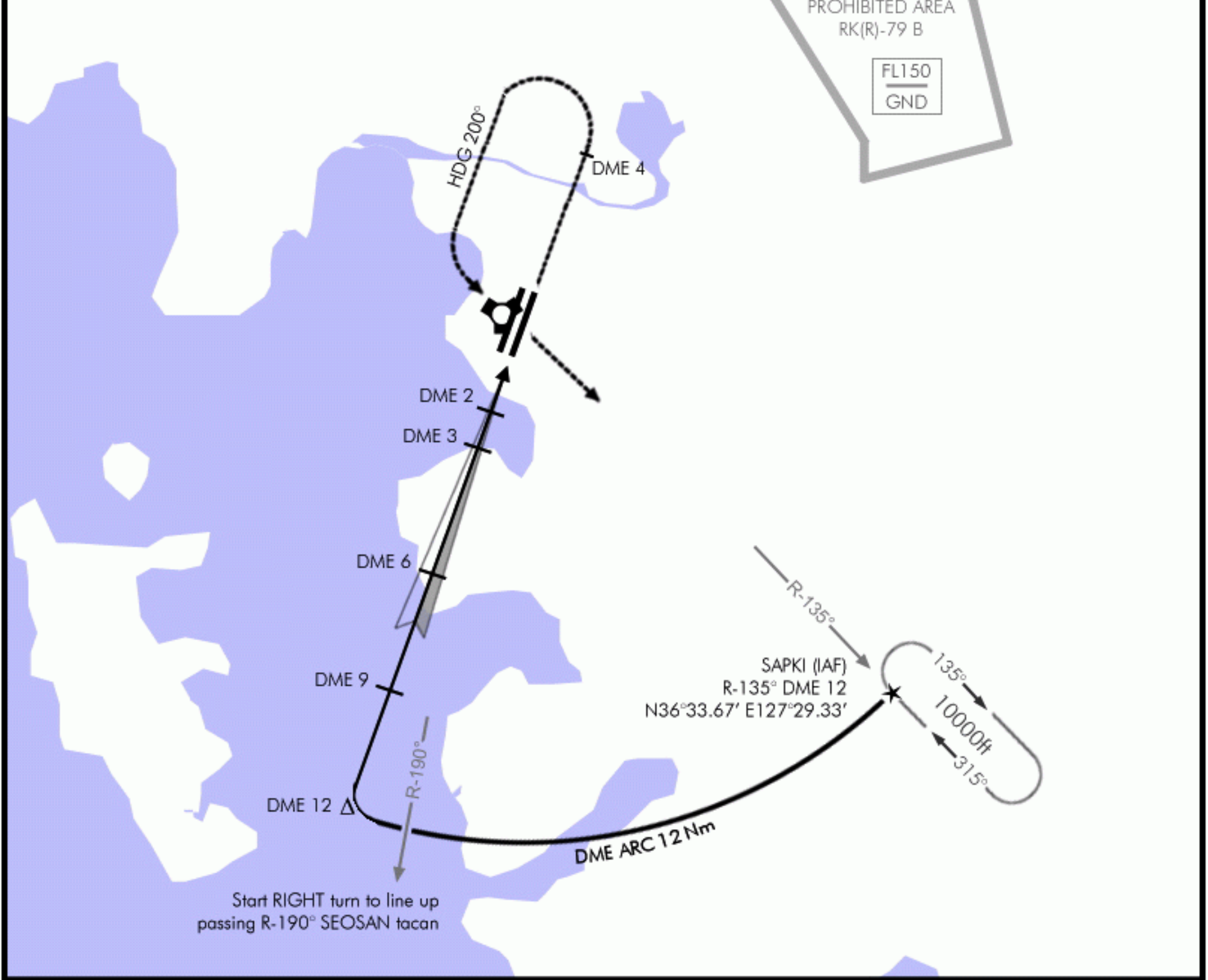
Date: 17 Dec 09

TACAN:	TWR:	ILS:	ILS DA(H):	LOC:	GPS:	ELEV:	
052X	353.1/136.75	111.5	226' (200' AGL)	020°	N36°41,72' E127°19.84'	026'	

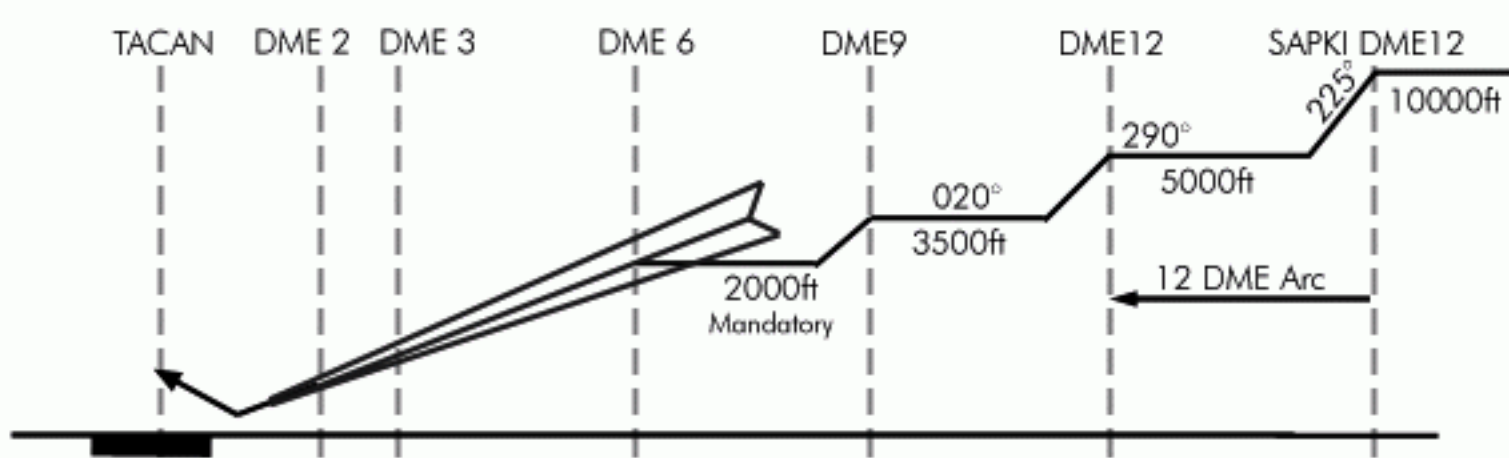
MISSED APPROACH: Climb straight ahead to 3000ft until reaching DME4. Then LEFT climbing turn to 5000ft hdg 200° until intercepting R-135° Seosan Tacan Outbound. Hold at SAPKI as published.

ALSF-1
PAPI

EMERG SAFE ALT 100 NM: 8600ft



Transition Level : FL 140 - Transition Altitude : 14000ft



MINIMA:

ILS: 226'(200'AGL)*
Vis: 200-800m
LOC: 446'(420' AGL)**
Vis: 300-1600m
Circling: 876'(850'AGL)
Vis: 600-2000m
*When ALS inop, increase vis to 1200m
**When ALS inop, increase vis to 2000m

ILS RWY 02R

NOT FOR REAL NAVIGATION - FALCON 4 BMS ONLY

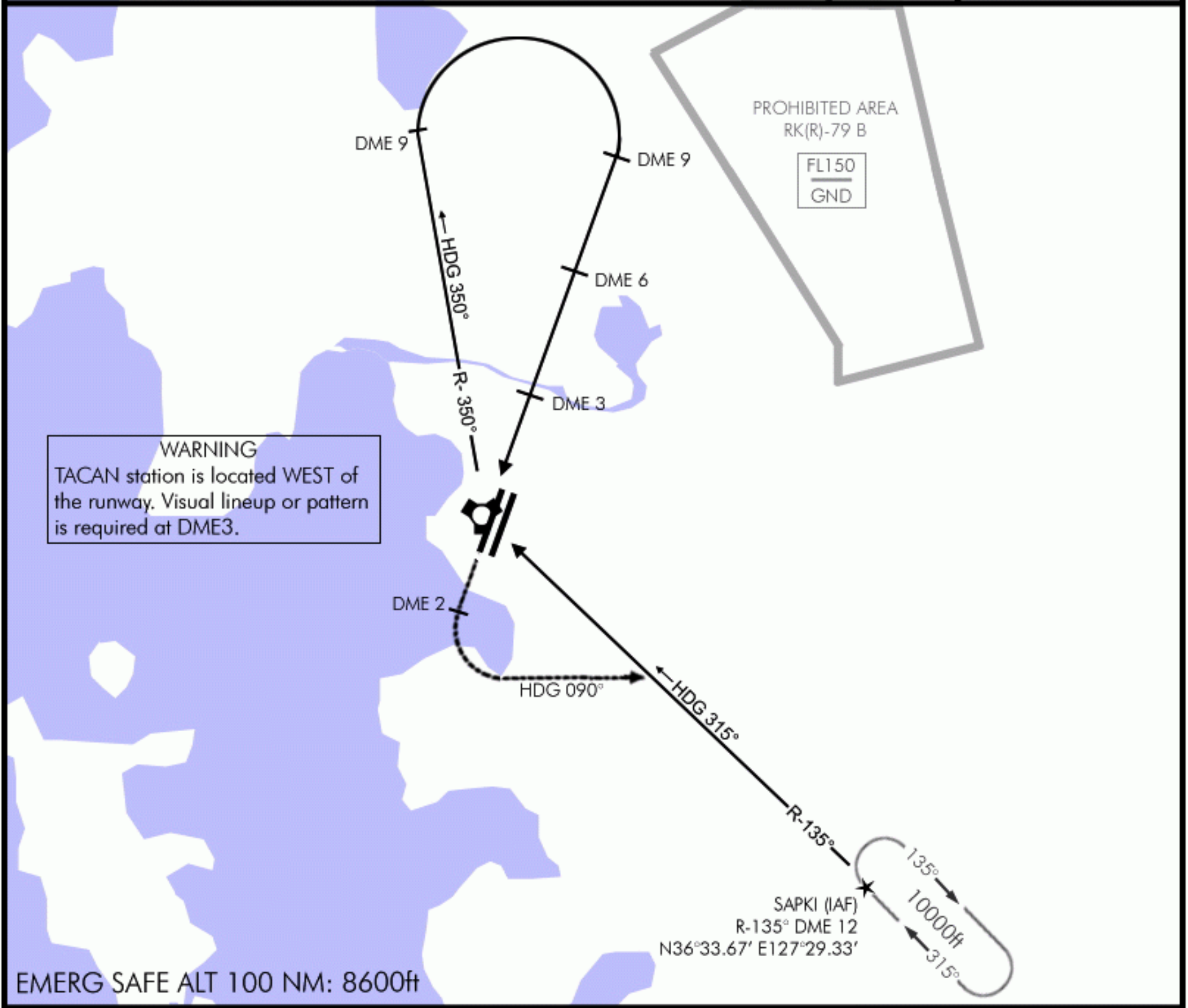
HI TACAN RWY 20R

Date: 17 Dec 09

TACAN: 052X	TWR: 353.1/136.75	TCN DA(H): 736' (710' AGL)	TCN RAD: 200°	GPS: N36°41,72' E127°19.84'	ELEV: 026'	
----------------	----------------------	-------------------------------	------------------	-----------------------------------	---------------	--

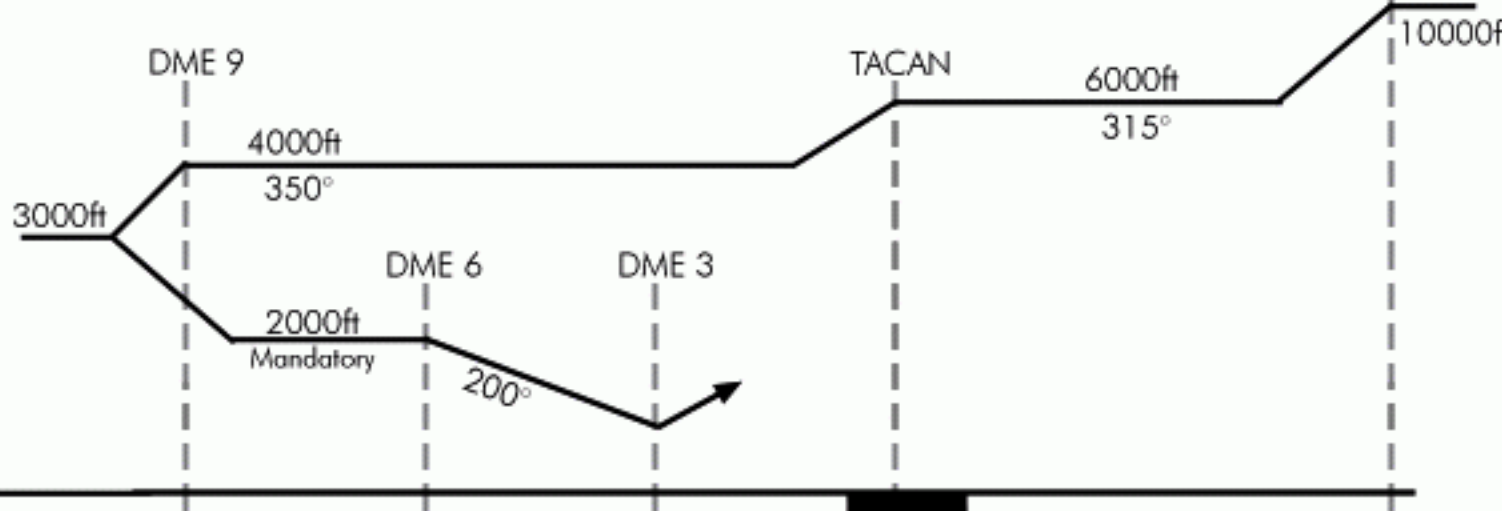
MISSED APPROACH: Climb straight ahead to DME2. Then LEFT climbing turn to 5000ft hdg 090° until intercepting R-135° Seosan Tacan outbound. Hold at SAPKI as published (10.000ft)

MALSF
PAPI



EMERG SAFE ALT 100 NM: 8600ft

Transition Level : FL 140 - Transition Altitude : 14000ft



MINIMA:

TACAN: 736'(710'AGL)*
Vis: 300-1600m
at DME 3

Circling: 926'(900'AGL)
Vis: 600-2000m
*When ALS inop, increase vis to 2000m

HI TACAN RWY 20L

Date: 17 Dec 09

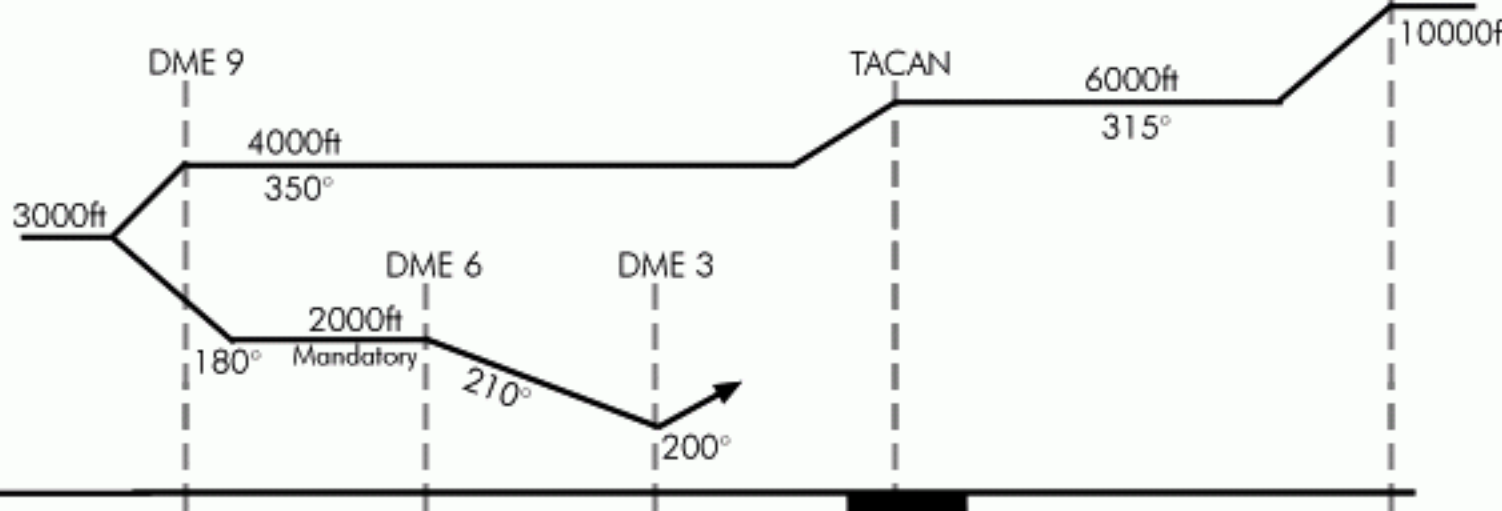
TACAN: 052X	TWR: 353.1/136.75	TCN DA(H): 726' (700' AGL)	TCN RAD: 200°	GPS: N36°41,72' E127°19.84'	ELEV: 026'	
----------------	----------------------	-------------------------------	------------------	-----------------------------------	---------------	---

MISSED APPROACH: Climb straight ahead to DME2. Then LEFT climbing turn to 5000ft hdg 090° until intercepting R-135° Seosan Tacan outbound. Hold at SAPKI as published (10.000ft)

MALSF
PAPI



Transition Level : FL 140 - Transition Altitude : 14000ft



MINIMA:

TACAN: 726'(700'AGL)*
Vis: 300-1600m
at DME 2

Circling: 926'(900'AGL)
Vis: 600-2000m

*When ALS inop, increase vis to 2000m

HI TACAN RWY 20L

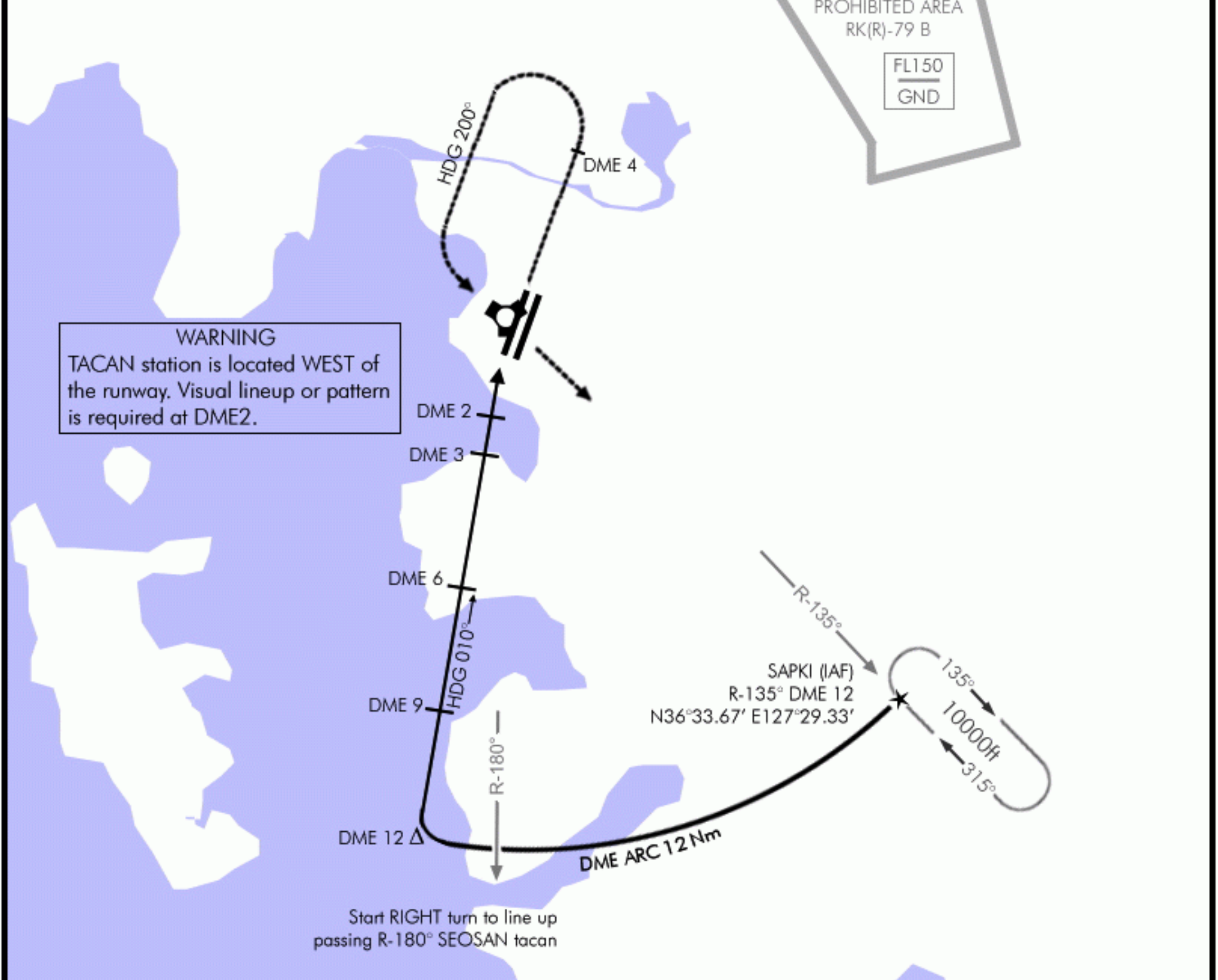
NOT FOR REAL NAVIGATION - FALCON 4 BMS ONLY

HI TACAN RWY 02L

Date: 17 Dec 09

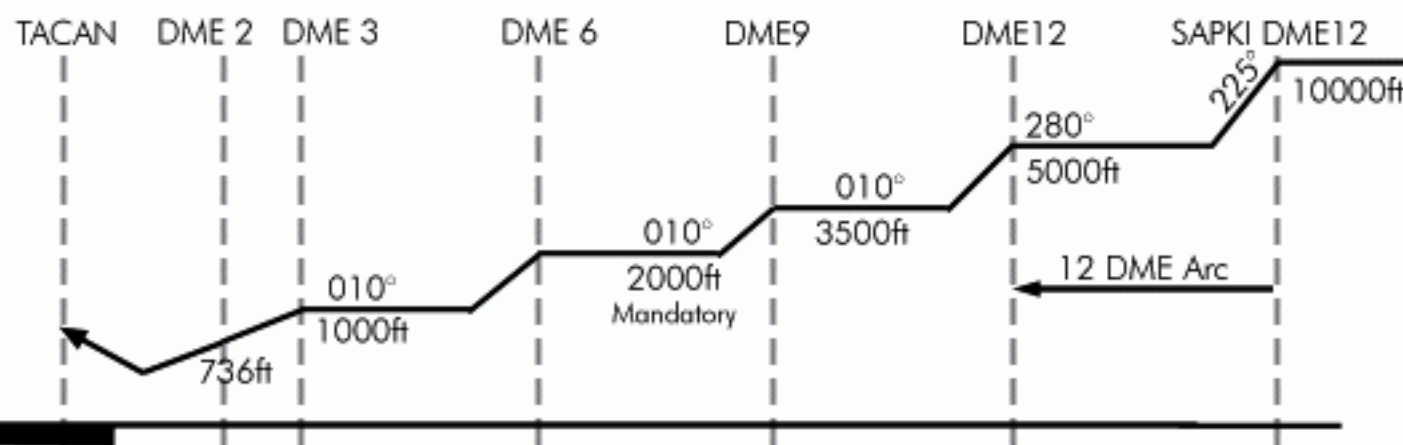
TACAN: 052X	TWR: 353.1/136.75	TCN DA(H): 736' (710' AGL)	TCN RAD: 010°	GPS: N36°41,72' E127°19.84'	ELEV: 026'	
MISSED APPROACH: Climb straight ahead to 3000ft until reaching DME4. Then LEFT climbing turn to 5000ft hdg 200° until intercepting R-135° Seosan Tacan Outbound. Hold at SAPKI as published.					MALSF 	

EMERG SAFE ALT 100 NM: 8600ft



Transition Level : FL 140 - Transition Altitude : 14000ft

MINIMA:



TACAN: 736'(710'AGL)*
Vis: 300-1600m
at DME 2

Circling: 926'(900'AGL)
Vis: 600-2000m
*When ALS inop, increase vis to 2000m

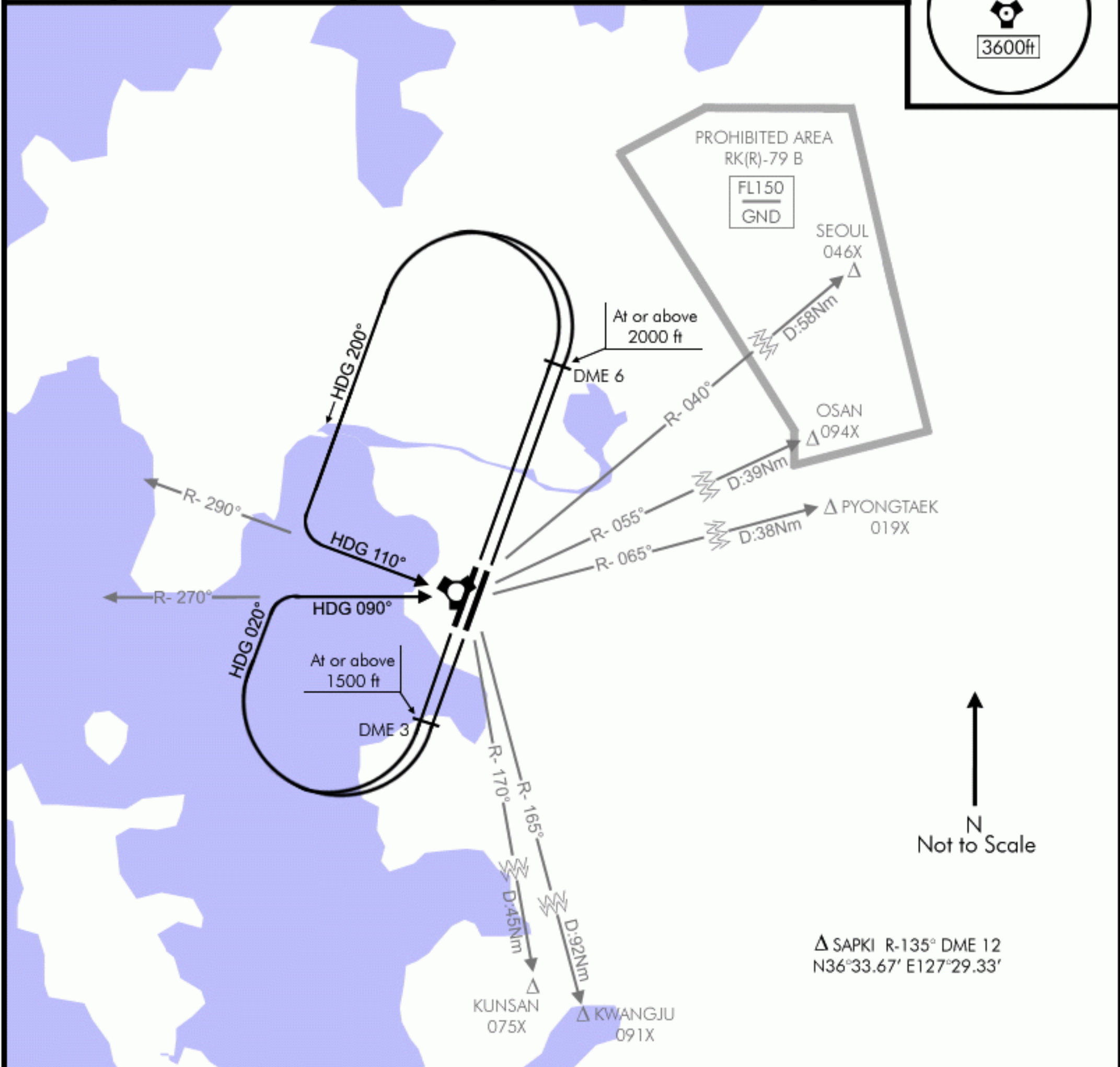
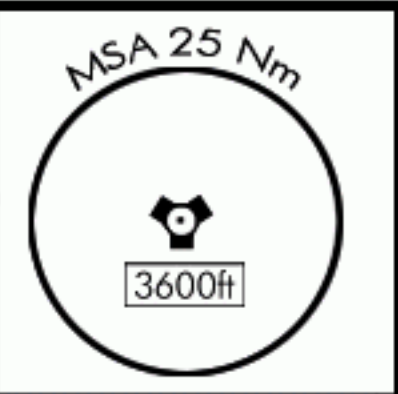
HI TACAN RWY 02L

NOT FOR REAL NAVIGATION - FALCON 4 BMS ONLY

SEOSAN ONE DEPARTURE

Date: 17 Dec 09

TACAN:	TWR:	TRANS LVL:	TRANS ALT:	GPS:	ELEV:
052X	353.1/136.75	FL140	14000 Ft	N36°41,72' E127°19.84'	026'



DEPARTURE ROUTE DESCRIPTION

RWY 02 L/R: Climb on Rwy heading until reaching 2000 feet or DME 6 whichever comes first, then LEFT climbing turn to 5000 feet heading 200°. Turn LEFT inbound on R-290° and continue to climb to assigned altitude. Thence,...

RWY 20 L/R: Climb on Rwy heading until reaching 1500 feet or DME3 whichever comes first, then RIGHT climbing turn to 4000 feet heading 020°. Turn RIGHT inbound on R-270° and continue to climb to assigned altitude. Thence,...

△ SAPKI R-135° DME 12
N36°33.67' E127°29.33'